

# OIL FILLER AND AIR BREATHER FILLER CAPS



The complete series of oil filter and breather filler caps makes it possible to meet all market demands.

Metal and plastic styles suitable for use on mobile equipment are available.

Filler caps perform a dual function, air filtration at the tank inlet and prefiltration of the fluid by means of the basket, in order to prevent the ingress of foreign material into the tank during filling and top-up operations.

Correct operation of breather filters makes for longer life of the filter cartridges installed in the hydraulic circuit, and in applications where high level of contamination are present.

## **Temperature**

- from -25°C to +100°C

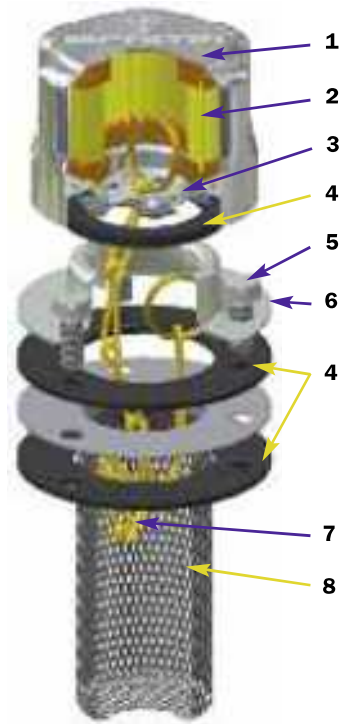
## **Compatibility**

- NBR seals and Cork Gasket, compatible with:  
Mineral oils to ISO 2943 - aqueous emulsions  
Synthetic fluids, glycol water.
- FPM seals, compatible with:  
Synthetic fluids type HS-HFDR-HFDS-HFDU.

**Metal oil filler and air breather filler caps**

# Series TA 46

## Dimensions



**TA46 B (Materials)**

- 1 - Cover: Chrome Plated Steel
- 2 - Filter element: Resin impregnated cellulose
- 3 - 6 - Flange: Galvanised Steel
- 4 - Seals: NBR  
Cork Gasket
- 5 - Screws: Galvanised Steel
- 7 - Chain, ring: Brass
- 8 - Basket: Galvanised Steel

**Flow rates with  $\Delta p$ : 0,02 bar**

Filtration	l/min
3 $\mu$ m	150
10 $\mu$ m	200

**Weight**

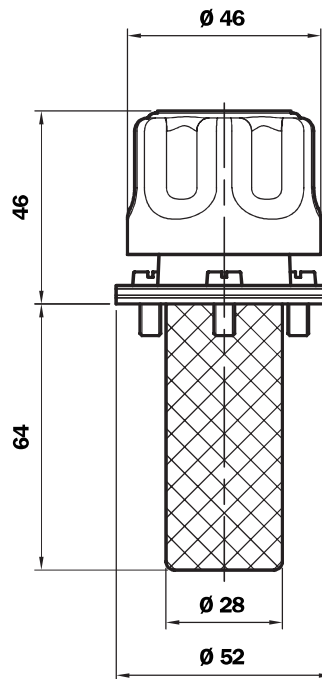
TA 46: 0,100 kg

**TA 46 B**

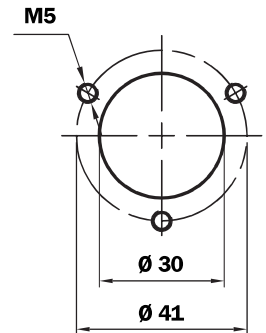
Bayonet connection  
Non-removable strainer



**Bayonet connection**



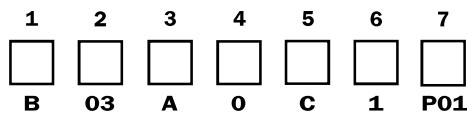
**Reservoir holes**



## Ordering information

**Filler cap  
TA46**

Example: TA46



**1 - Connection to reservoir**

- B** Flange with bayonet connection

**2 - Filter element**

- 03** 3  $\mu$ m
- 10** 10  $\mu$ m

**3 - Seal**

- A** NBR
- B** Cork gasket

**4 - Valves**

- 0** Without valves

**5 - Variants**

- 0** Standard
- C** With chain

**6 - Basket**

- 0** Without
- 1** L= 65 mm

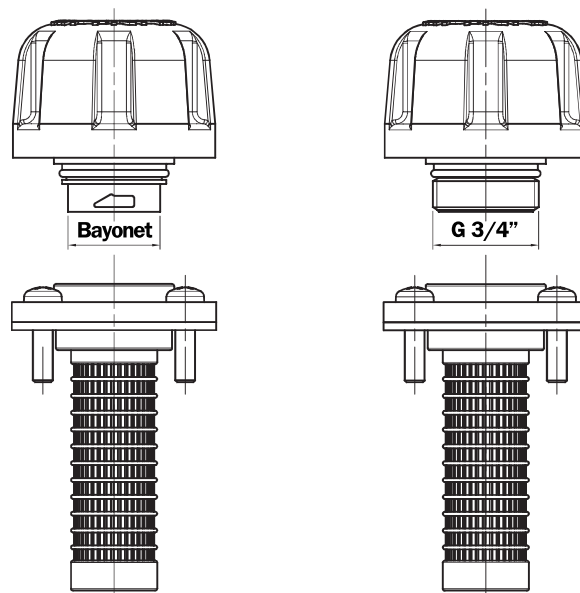
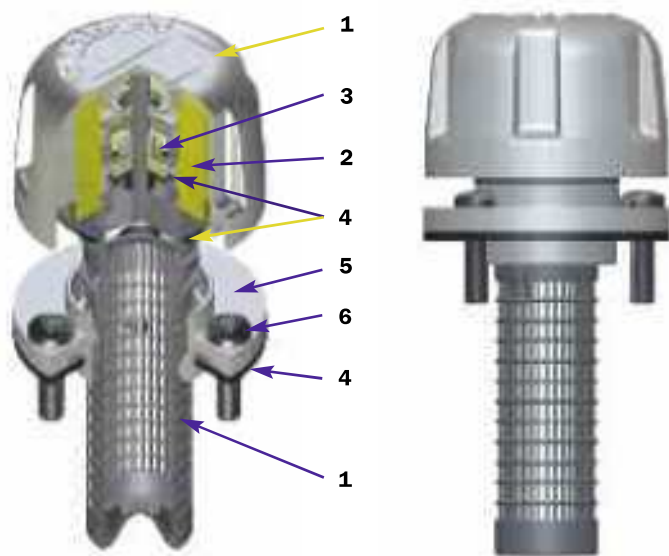
**7 - Options**

- P01** MP Filtri standard

# Series TAP 50

Nylon oil filler and air breather filler caps

## Dimensions



### TAP050 (Materials)

- 1 - Cover/ringnut: Nylon
- 2 - Filter element: Resin impregnated cellulose L10  
Polyurethane P10
- 3 - Pressurisation valve: Nylon  
Galvanised Steel  
NBR
- 4 - Seal: NBR
- 5 - Flange: Nylon
- 6 - Screws: Galvanised Steel
- 7 - Basket: Nylon

### Flow rates with $\Delta p$ : 0,02 bar

Filtration	l/min
10 $\mu$ m	202

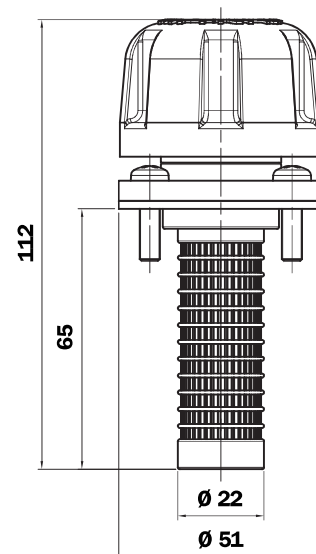
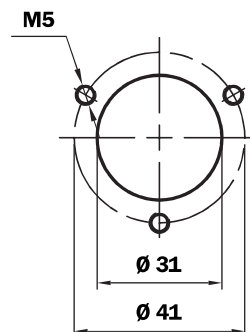
### Quantity per pack Number of Parts

TAP50	10
-------	----

### Weight

TAP50: 0,060 kg

### Reservoir holes



## Ordering information

### Filler cap

TAP50

Example: TAP50

	1	2	3	4	5	6
TAP50	<input type="checkbox"/>	<input type="checkbox"/>	<input type="checkbox"/>	<input type="checkbox"/>	<input type="checkbox"/>	<input type="checkbox"/>
Example: TAP50	B	10	A	1	0	P01

### 1 - Connection to reservoir

- B Flange with bayonet connection
- C Flange with bayonet connection G 3/4"

### 4 - Valves

- 0 Without
- 1 0,5 bar pressurisation valve

### 2 - Filter element

- L10 10  $\mu$ m
- P10 10  $\mu$ m

### 5 - Basket

- 0 Without
- 1 L= 65 mm

### 3 - Seal

- A NBR

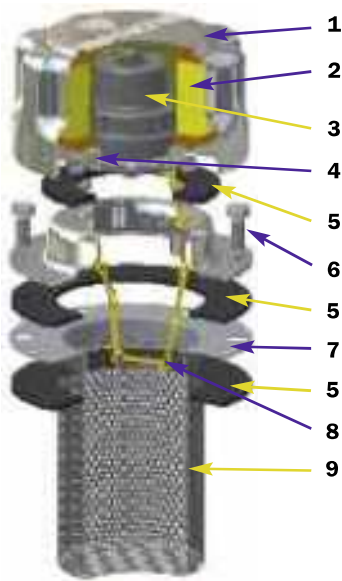
### 6 - Options

- P01 MP Filtri standard



# Series TA 80

## Metal oil filler and air breather filler caps



### TA80 B/D (Materials)

- 1** - Cover: Chrome Plated Steel
- 2** - Filter element: Resin impregnated cellulose
- 3** - Pressurisation valve:
  - Bodies: Nylon
  - End cap-disk: Galvanised Steel
  - Spring: Steel
  - Seals: NBR
- 4** - Flange and anti-splash feature: Galvanised Steel
- 5** - Seals: Cork Gasket
  - NBR
- 6** - Screws: Galvanised Steel
- 7** - Flange: Galvanised Steel
- 8** - Chain, ring: Brass
- 9** - Basket TA80B: Galvanised Steel

### Flow rates with $\Delta p$ : 0,02 bar

Filtration	l/min
3 $\mu m$	450
10 $\mu m$	550

### Weight

Strainer L 80 mm:	0,330 Kg
Strainer L 150 mm:	0,350 Kg

### TA 80 B

Bayonet connection  
Non-removable basket



### TA 80 B

Bayonet connection  
With Padlock tab



### TA 80 D

Bayonet connection  
Removable basket



### TA80B00....P01

Bayonet connection  
Closed filler cap without  
filter element



### TA80B10....P01

Bayonet connection  
Filler cap with filter  
element



### TA80B03.9..P01

Bayonet connection  
Filler cap with anti-splash  
feature and filter element



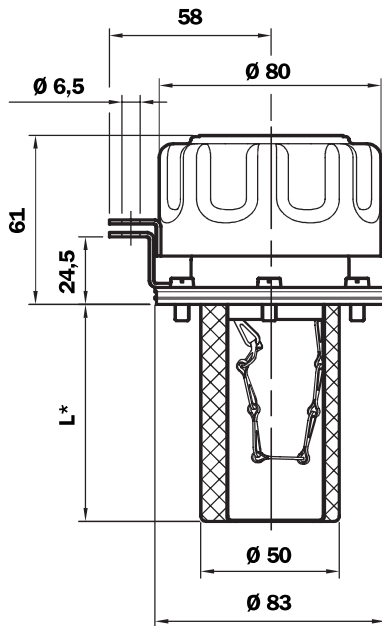
### TA80B10.1..P01

Bayonet connection  
Filler cap with  
pressurisation valve  
and filter element

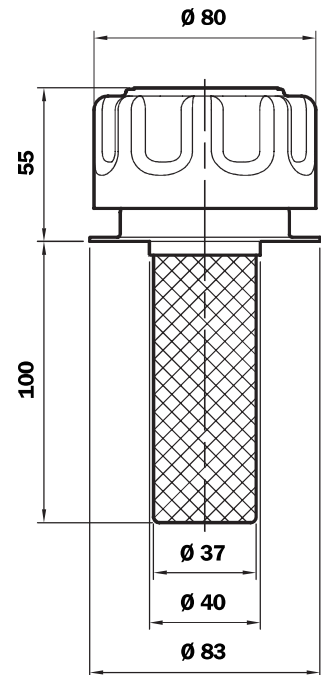


# Dimensions

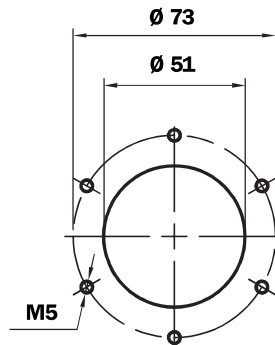
## Bayonet connection



## Weld flange



## Reservoir holes

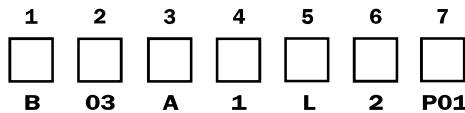


# Ordering information

### Filler cap

**TA80**

Example: TA80



### 1 - Connection to reservoir

- B** Flange with bayonet connection
- D** Weld flange

### 2 - Filter element

- 00** Without filter (Blank filler cap)
- 03** 3 µm
- 10** 10 µm

### 3 - Seal

- A** NBR
- B** Cork gasket

### 4 - Valves

- 0** Without
- 1** 0,3 bar pressurisation valve (only with seals NBR)
- 2** 0,7 bar pressurisation valve (only with seals NBR)
- 9** Anti-splash feature (only with filter element 3 µm)

### 5 - Variants

- 0** Standard
- L** With Padlock tab (B versions only)

### 6 - Basket

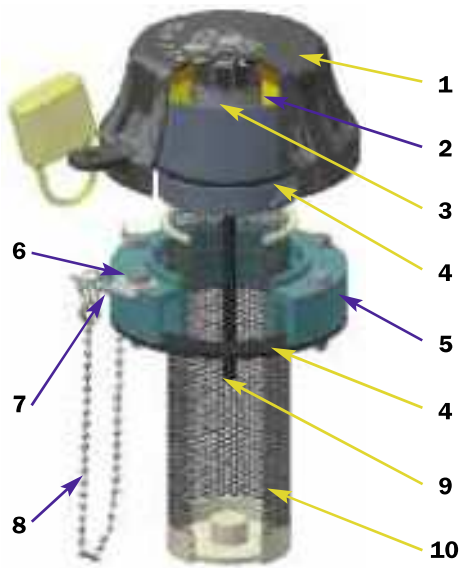
- 0** Without
- 1** \*L= 80 mm (B versions only)
- 2** \*L= 150 mm (B versions only)
- 3** \*L= 100 mm (D versions only)

### 7 - Options

- P01** MP Filtri standard

# Series TAP 90

## Nylon oil filler and air breather filler caps



### TAP90 (Materials)

- 1 - Cover/ringnut: Nylon
- 2 - Filter element: Resin impregnated cellulose  
Polyurethane
- 3 - Pressurisation valve: Nylon  
Galvanised Steel  
NBR
- 4 - Seal: NBR
- 5 - Flange B: Nylon
- 6 - Screws: Galvanised Steel
- 7 - Padlock tab: Galvanised Steel
- 8 - Chain, ring: Brass
- 9 - Dipstick: Phosphated Steel
- 10 - Basket: Galvanised Steel/Nylon

### Flow rate with $\Delta p$ : 0,02 bar

Filtration	l/min
3 $\mu m$	450
10 $\mu m$	550

### Weight

Basket L 120 mm: 0,250 Kg  
Basket L 250 mm: 0,310 Kg

**TAP90 B.....**  
Flange with  
bayonet connection



External chain

**TAP90 R.....**  
Flange with  
M52x2 connection



Internal chain

**TAP90 F.....**  
Flange with spigot  
DIN 24557 Connection  
M52x2



Internal chain

**TAP90 C.....**  
Weld riser  
Connection M52x2



Weld riser in  
Galvanised Steel,  
internal chain

**TAP90 B-C-R-F**  
With dipstick



**TAP90 B-C-R-F**  
Closed filler cap without  
filter element



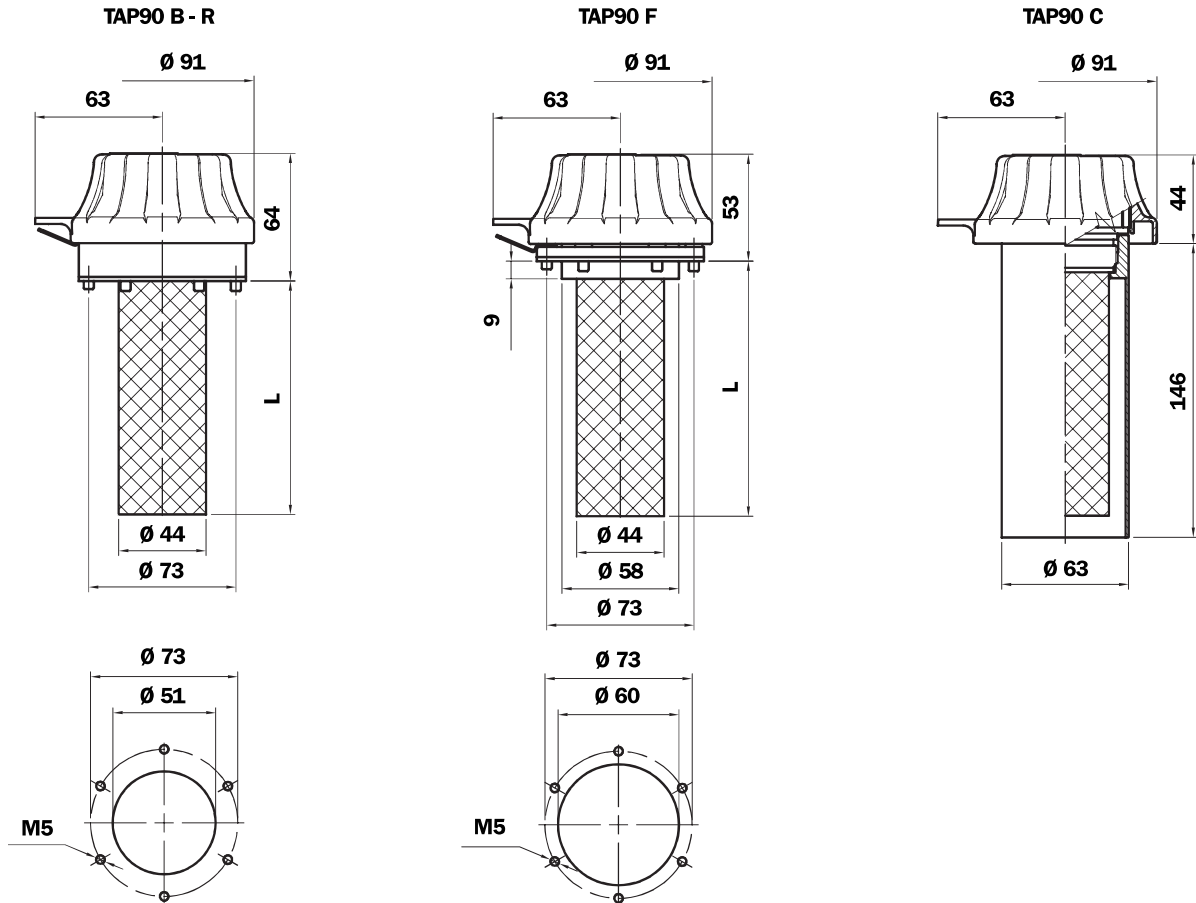
**TAP90 B-C-R-F**  
Filler cap with filter  
element



**TAP90 B-C-R-F**  
Filler cap with  
pressurisation valve

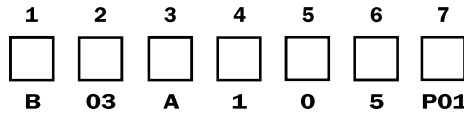


# Dimensions



## Ordering information

**Filler cap**  
**TAP90**  
**Example: TAP90**



### 1 - Connection to reservoir

- B** Flange with bayonet connection
- C** Weld riser (M52X2 version only)
- F** Flange with threaded M52x2 connection Spigot  $\varnothing 60$  (DIN 24557)
- R** Flange with M52X2 threaded connection

### 2 - Filter element

- 00** Without filter (Blank filler cap)
- 03** 3  $\mu\text{m}$
- 10** 10  $\mu\text{m}$

### 3 - Seal

- A** NBR

### 4 - Valves

- 0** Without
- 1** 0.3 bar pressurisation valve
- 2** 0.7 bar pressurisation valve

### 5 - Variantes

- 0** Standard
- L** With Padlock tab
- A** With Dipstick
- C** With Chain external for connection **B**  
With Chain internal for connection **C-F-R** (with basket only)
- D** With Padlock tab and chain external for connection **B**  
With Padlock tab and chain internal for connection **C-F-R** (with basket only)
- E** Dipstick and chain external (only connection **B**)
- F** Dipstick and Padlock tab
- G** Dipstick, Padlock tab and chain external (only connection **B**)

### 6 - Basket (Stainless steel basket on request)

- 0** Without
- 1** L= 120 mm
- 3** L= 250 mm

In the version with chain the L= 120 basket features a press fitting.

### 7 - Options

- P01** MP Filtri standard



# Series TAP 114

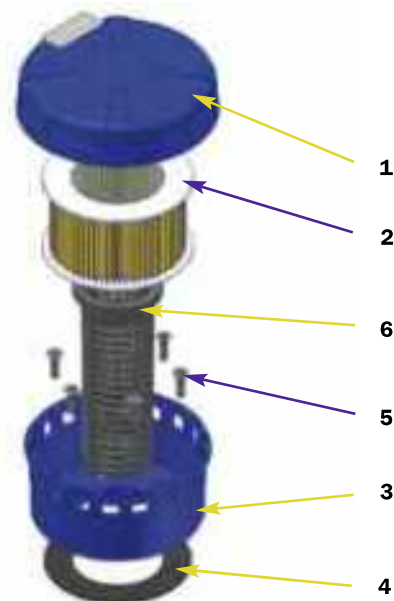
**Nylon oil filler and air breather filler caps**



**Example  
TAP114  
Length 1**



**Example  
TAP114  
Length 2**

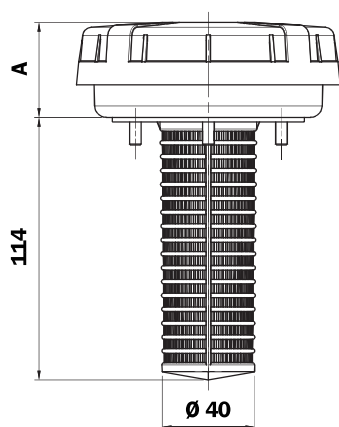


**TAP114 (Materials)**

- 1 - Cover: Nylon
- 2 - Filter element: Resin impregnated cellulose
- 3 - Flange: Nylon
- 4 - Seal: NBR
- 5 - Screws: Galvanised Steel
- 6 - Basket: Nylon

## Dimensions

**TAP 114**



Length	A
1	41
2	56

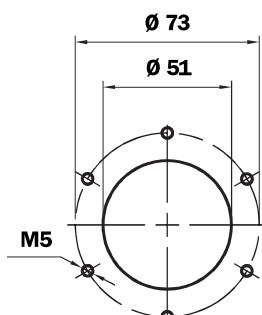
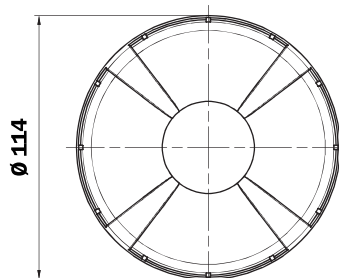
**Flow rates with  $\Delta p$ : 0,02 bar**

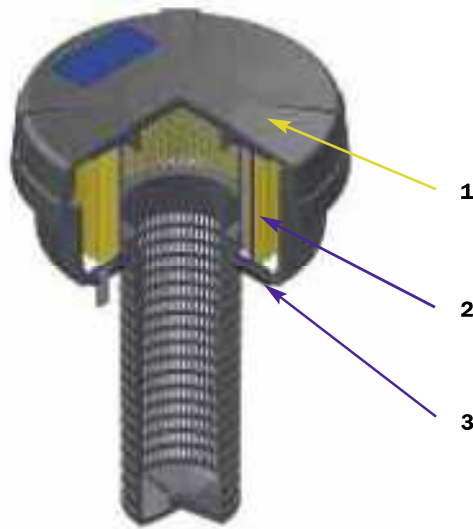
**Length 1**  
**Filtration**      I/min  
 10  $\mu$ m            1450

**Length 2**  
**Filtration**      I/min  
 10  $\mu$ m            1600

**Weight**  
 TAP 114 1: 0,185 Kg  
 TAP 114 2: 0,200 Kg

**Reservoir  
holes**





## TAP 114 spare parts

Item.	Description	Q.ty	Filler cap series TAP 114	
1	Complete filler cap	1	See order table	
2	Filter Element	1	See order table	
3	Seal	1	NBR 01026306	FPM 01026332

---

---

---

---

---

---

---

---

## Ordering information

### Filler cap

**TAP114**

Example: TAP114

1	2	3	4	5
<input type="checkbox"/>	<input type="checkbox"/>	<input type="checkbox"/>	<input type="checkbox"/>	<input type="checkbox"/>
2	L10	A	1	P01

### Filter element

**A114**

Example: TAP114

1	2	3
<input type="checkbox"/>	<input type="checkbox"/>	<input type="checkbox"/>
2	L10	P01

### 1 - Length

<input type="checkbox"/> 1
<input type="checkbox"/> 2

### 2 - Filter element

<input type="checkbox"/> L10	10 µm
------------------------------	-------

### 3 - Seal

<input type="checkbox"/> A	NBR
----------------------------	-----

### 4 - Basket

<input type="checkbox"/> 0	Without
<input type="checkbox"/> 1	L= 114 mm

### 5 - Options

<input type="checkbox"/> P01	MP Filtri standard
------------------------------	--------------------

# Series TAP 115

Nylon oil filler and air breather filler caps



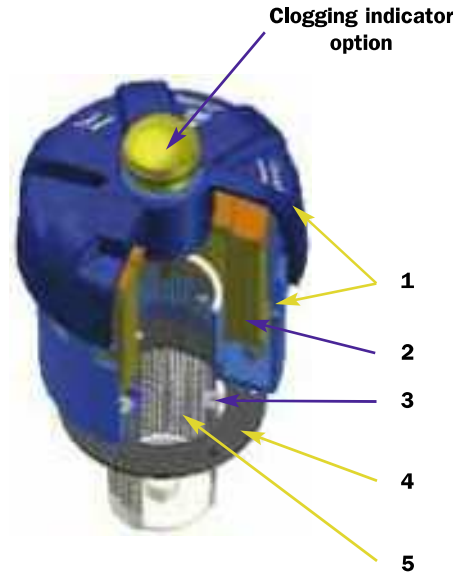
Example  
TAP115

Length 1  
Without indicator



Example  
TAP115

Length 2  
With indicator



### TAP115 (Materials)

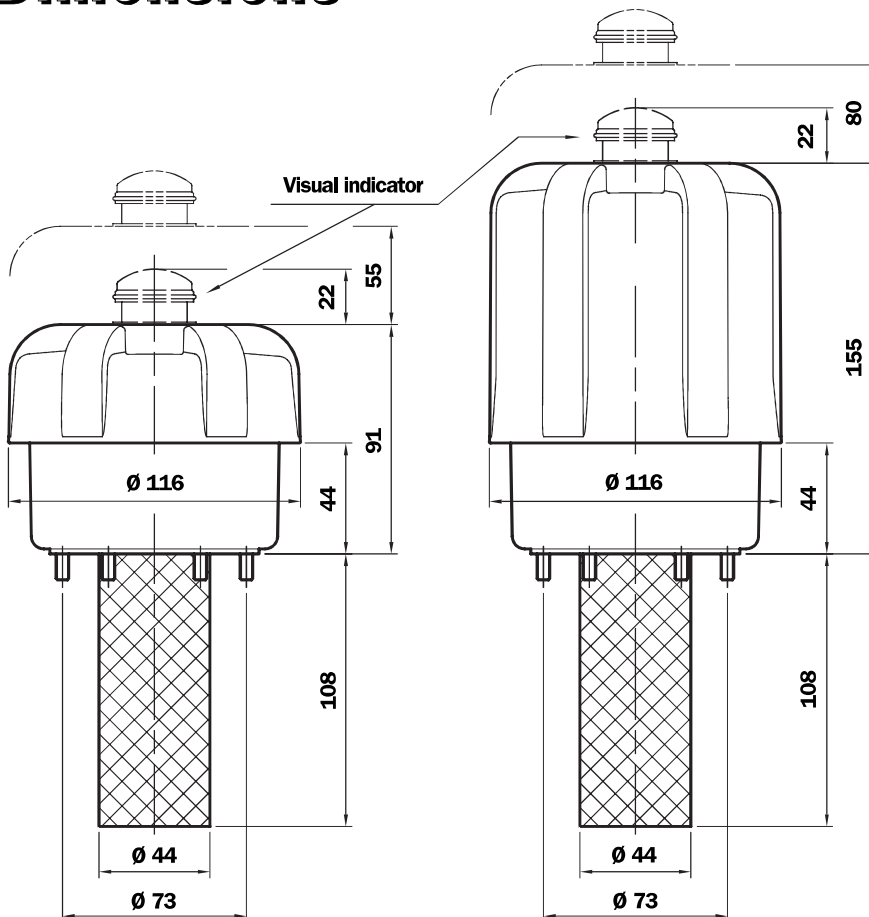
- 1 - Cover/Flange: Nylon
- 2 - Filter element: Resin impregnated cellulose/Microfibre
- 3 - Seals: NBR  
FPM
- 4 - Screws: Galvanised Steel
- 5 - Basket: Galvanised Steel/Nylon

### Clogging indicator

Set pressure: - 0,062 bar ± 10 %

Manual reset

## Dimensions



Flow rates with  $\Delta p$ : 0,02 bar

### Length 1

Filtration	l/min
3 $\mu$ m	1600
10 $\mu$ m	2000

### Length 2

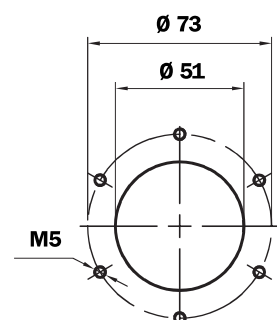
Filtration	l/min
3 $\mu$ m	2150
10 $\mu$ m	2150

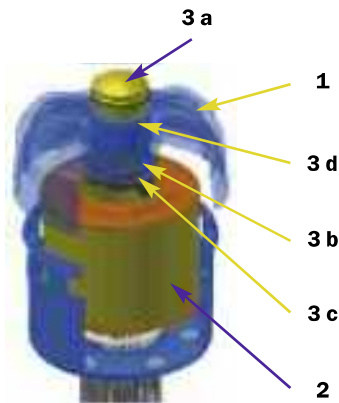
### Weight

TAP 115 1: 0,460 Kg

TAP 115 2: 0,585 Kg

### Reservoir holes





## TAP 115 spare parts

Item.	Description	Q.ty	Filler cap series TAP 115	
<b>1</b>	Complete filler cap	1	See order table	
<b>2</b>	Filter Element	1	See order table	
<b>3</b>	Indicator kit	1	NBR 02005187	FPM 02005188
<b>3a</b>	Visual indicator	1	S62P01	
<b>3b</b>	Seal	1	O-R 3106 Ø 26,64 X 2,62	
<b>3c</b>	Indicator securing screw	1	01022670	
<b>3d</b>	O-R indicator	1	O-R 2112 Ø 28,3 x 1,78	

## Changing the filter element in TAP 115 series filler caps

- 1 Thoroughly clean the filler cap and adjacent parts.
- 2 Unscrew and raise the cover.
- 3 Replace the filter element.
- 4 Screw the cover.



## Ordering information

**Filler cap**  
**TAP115**

1	2	3	4	5	6	7
2	F	A03	A	1	B	P01

**Filter element**  
**A115**

1	3	7
2	A03	P01

### 1 - Length

1
2

### 2 - Connection

F	Flange
---	--------

### 3 - Filter element

A03	3 µm
L10	10 µm

### 4 - Seal

A	NBR
V	FPM

### 5 - Basket

0	Without
1	L= 120 mm

### 6 - Clogging indicator

A	Without
B	Clogging indicator

### 7 - Options

P01	MP Filtri standard
-----	--------------------